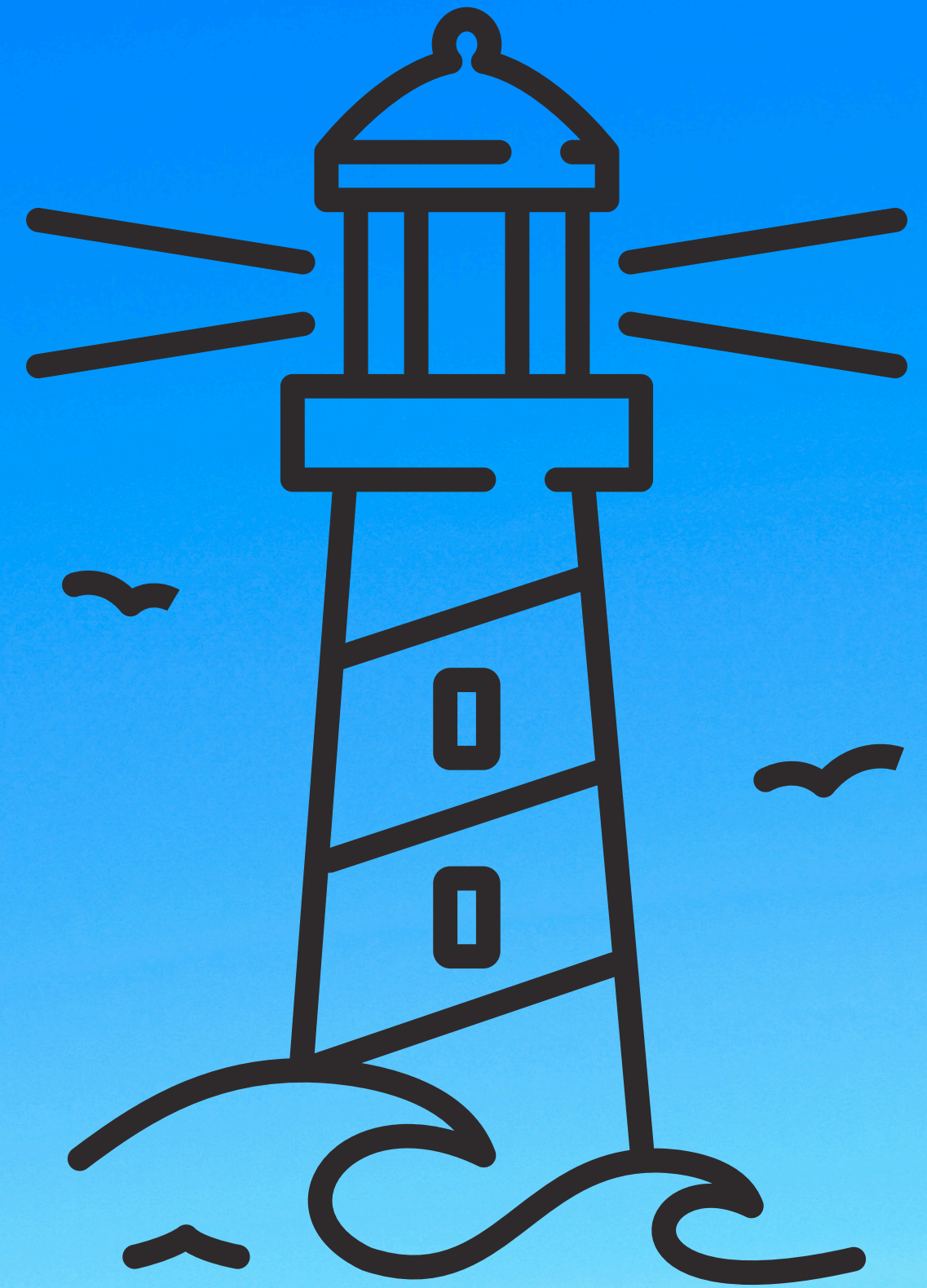


Our lighthouse project



by Michael, Bryan & Jason

What we used

- pringles can
- green, white, yellow and orange card
- battery
- wires
- light bulb
- straws
- And rocks
- selotape

Step by step

- First we wired the light bulb to the top of the pringles can
- Then we we did the switch
- After that we stuck the card to the tube
- Finally we did the background and support.

Skills learned

- That selotape doesn't hold everything
- Think about the materials that we use
- How to use batteries a lot easier
- we worked as a team and colaborated
- we used creative designing skills

Some of the problems we had

- trying to get the lighthouse to balance on the support
- trying to tape down the support
- the wire kept on disconnecting from the battery.
- we were a man down for half the project.
- we started a day late.

Finished Product

